

CHICAGO

PROJECTION MAPPING

Company & Capabilities

Prepared for Web Distribution

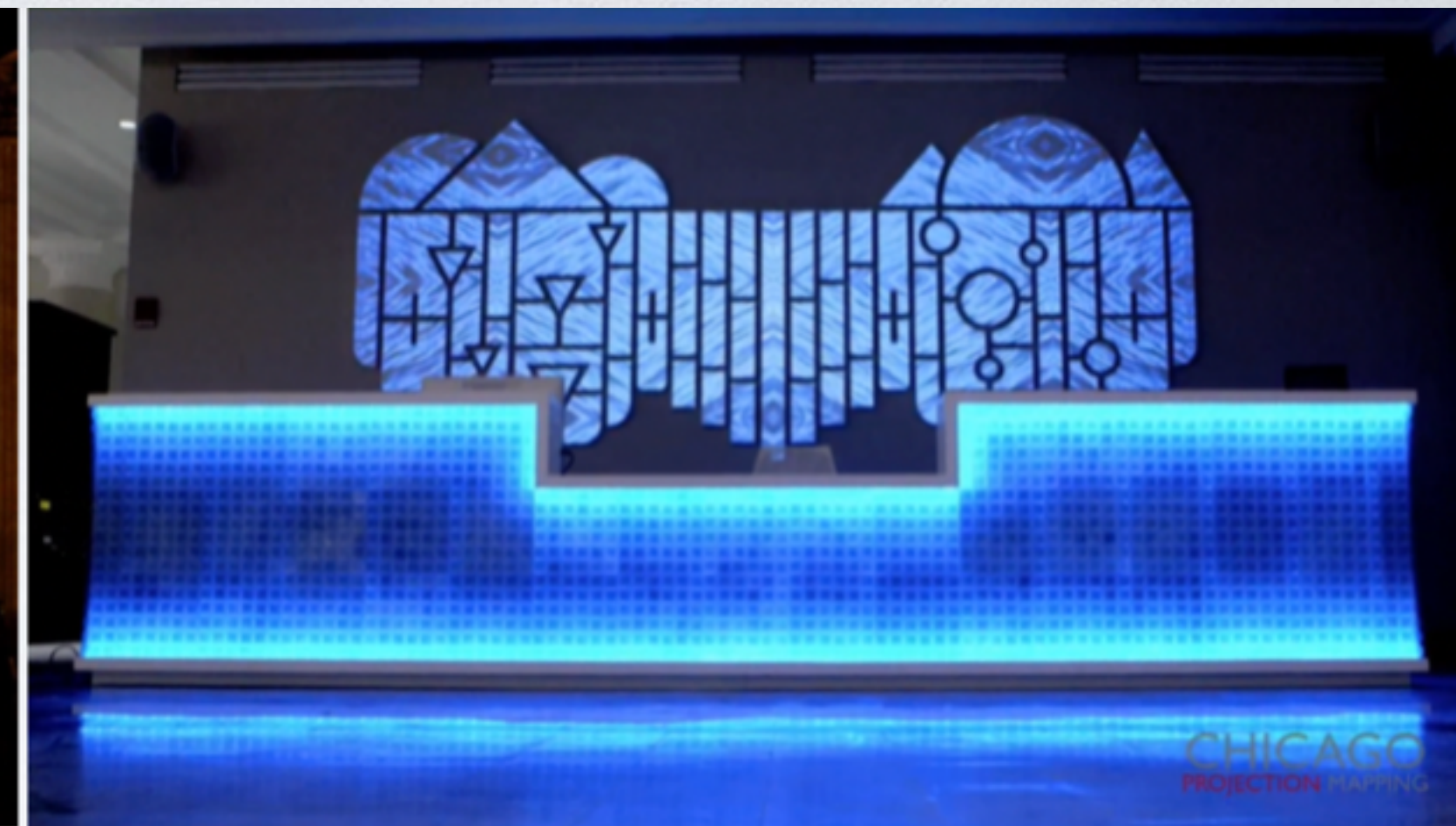
2018 Revision

We are Chicago Projection Mapping.

We Make Light Work.



About Our Company



[View Our Highlight Reel](#)

Founded in 2012, **Chicago Projection Mapping** is among the first dedicated 3D / 4D projection mapping firms in the nation, with a storied clientele ranging from Fortune 500 companies, to historic universities, to worldwide entertainers, and beyond.

We are driven by our dedication to exceptional client service and the pursuit of visual experiences that defy the imagination - crafting light into art that must be seen to be believed.

Clients



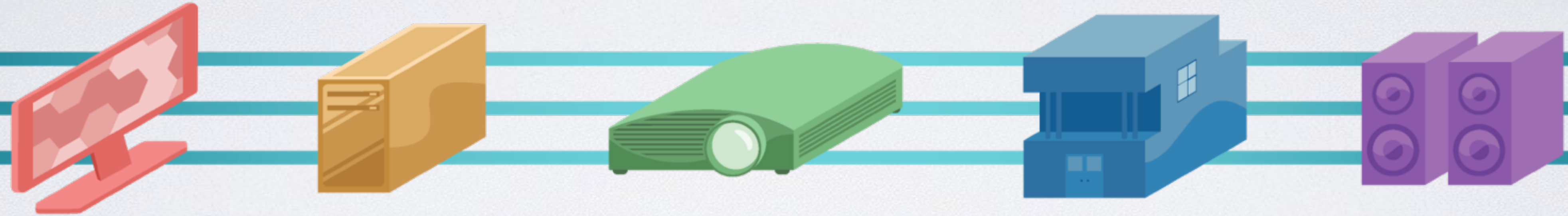
CPM services a variety of clients, ranging from Fortune 500 companies, to individual venues and event spaces. Our team is also the trusted source for content and consulting to other mapping and audio/visual companies.

A partial list of our premiere clients includes Target, Adobe Inc., Porsche, Nestlé Purina, AT&T, Leo Burnett, University of Chicago, IIT Chicago-Kent School of Law, Dow Agro, TV One, Hilton Hotels, and Red Bull, among others.

We place exceptional focus on our client interaction and service, which is reflected in the caliber of our work and our high rate of return projects.

Creating Your Vision

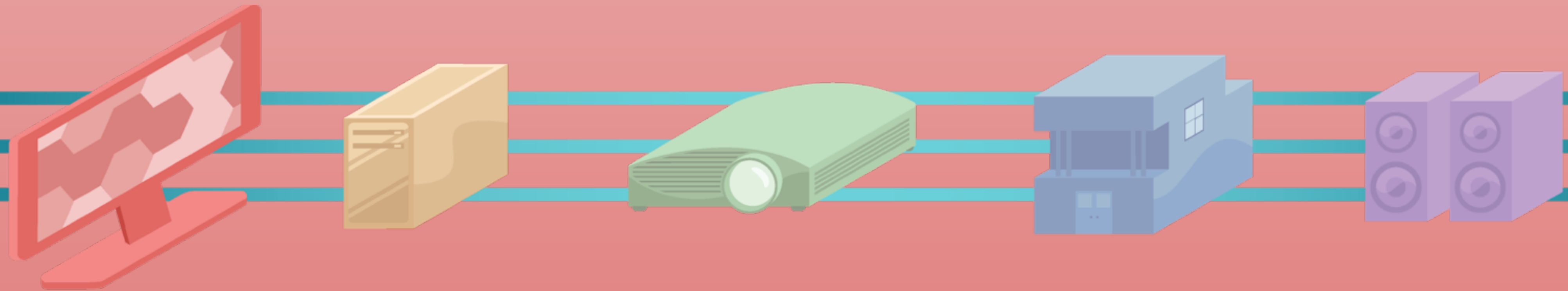
Each element of an installation contributes to the impact and quality of your presentation. Chicago Projection Mapping provides deep understanding of each step of the process.



All projection mapping installations consist of five key elements;

Creating Your Vision

All projection mapping installations consist of five key elements;



Content

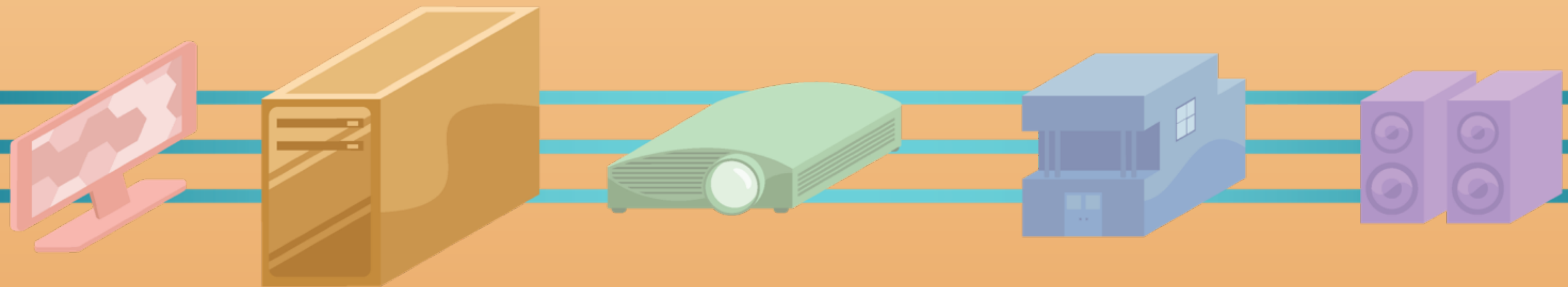
What Can You Imagine?

CPM's Content Capabilities Include...

*2D/3D Animation Services - Extensive Asset Creation Capabilities - Procedurally Generated Media
Music, SFX, and Sound Reactivity - Interactive/Reactive Controls - Material/Shader Creation - Content Templates for Media Conversion*

Creating Your Vision

All projection mapping installations consist of five key elements;



Content

Mapping

Bringing Your Vision to Life

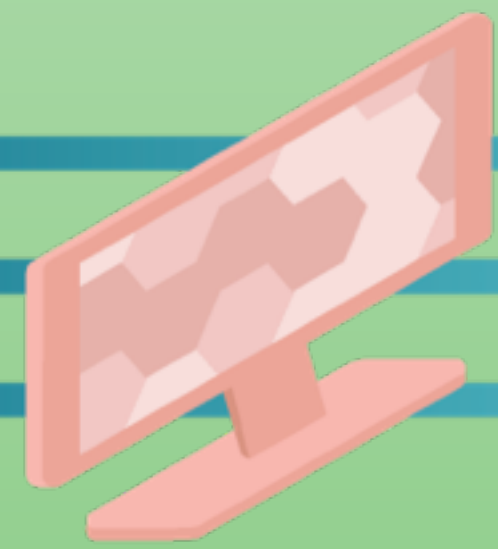
CPM's Mapping Capabilities Include...

Industry-Leading Mapping Experience - Specialty in Standard Platforms, including TouchDesigner, Resolume, Unity, D3, and Many More

Custom Software Development - Cutting-Edge Mapping and Media Servers - Hardware Selection, Acquisition & Brokerage

Creating Your Vision

All projection mapping installations consist of five key elements;



Content



Mapping



Projectors

Let There Be Light



CPM's Projection Capabilities Include...

State-of-the-Art Hardware, Up to 40,000 Lumens - Specialty Lensing / Custom Mounting - Extensive National Distribution Channels

Professional-Grade Audio at Massive Scale - Power & Signal Flow - 4K+ UHD Ready

Creating Your Vision

All projection mapping installations consist of five key elements;



Content



Mapping



Projectors



Surface

The World is a Canvas



CPM's Surface Capabilities Include...

Mapping to; Existing Interior/Exterior Architecture - Constructed Staging and Surfaces - Murals and Paintings

Sculptures / Custom 3D Objects - Any White, Matte, Non-Reflective Surface

Creating Your Vision

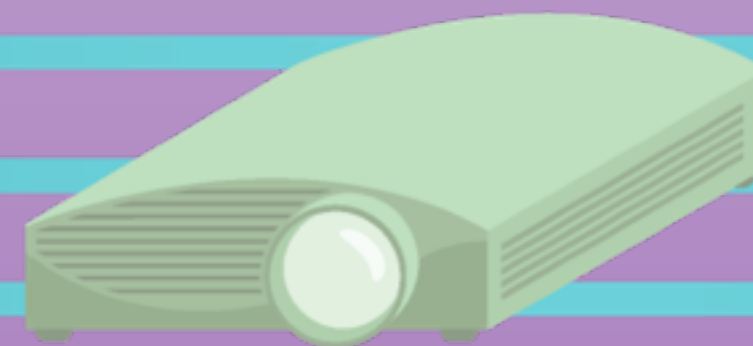
All projection mapping installations consist of five key elements;



Content



Mapping



Projectors



Surface



Audio

*Taking Projection to
Another Dimension*

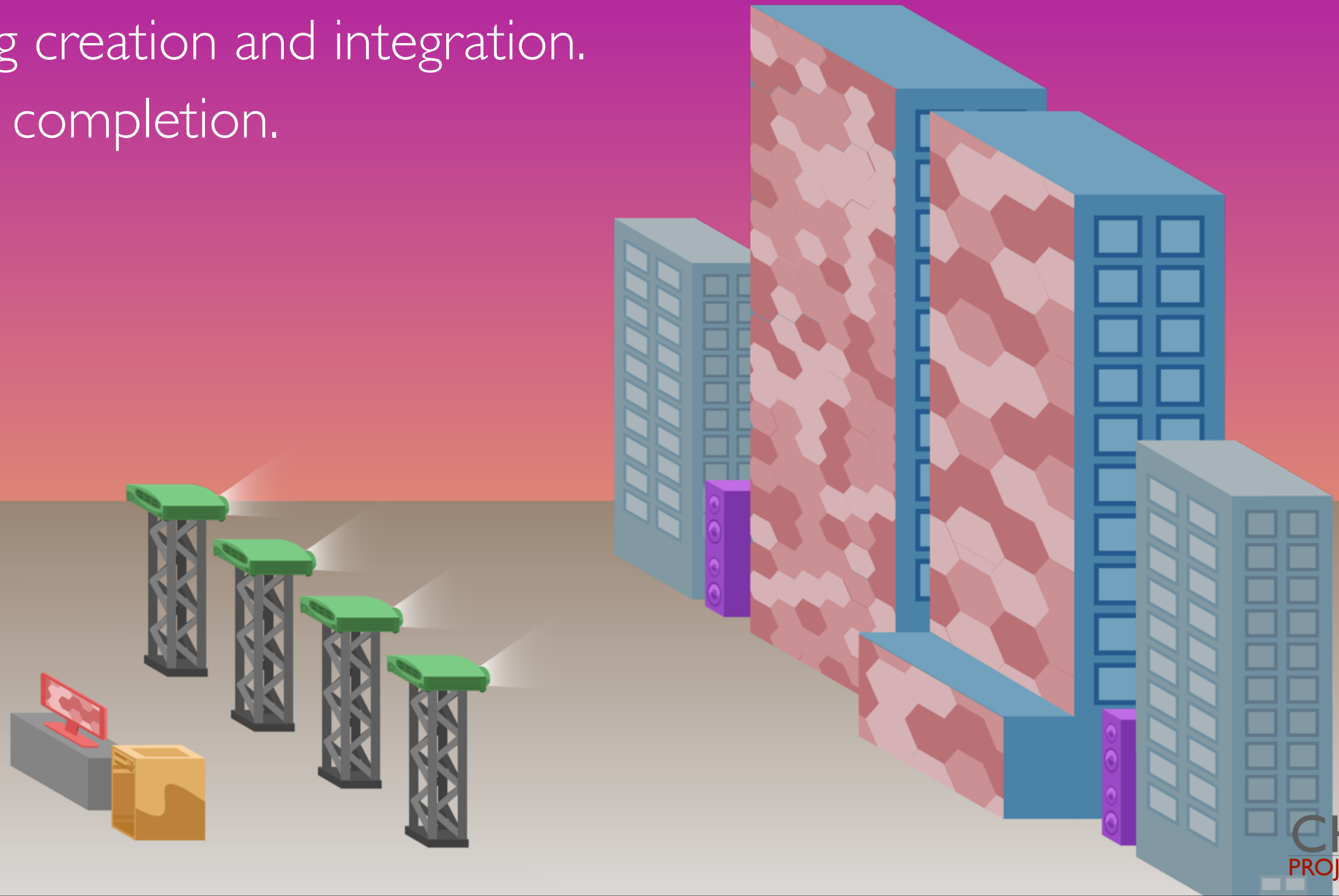
CPM's Audio Capabilities Include...

Custom Sound Design - Original Musical Scoring - Full Systems from Boardroom to Stadium

Sync with MIDI, DMX, Serato, and Ableton Link - Mono, Stereo, and Surround Mixing

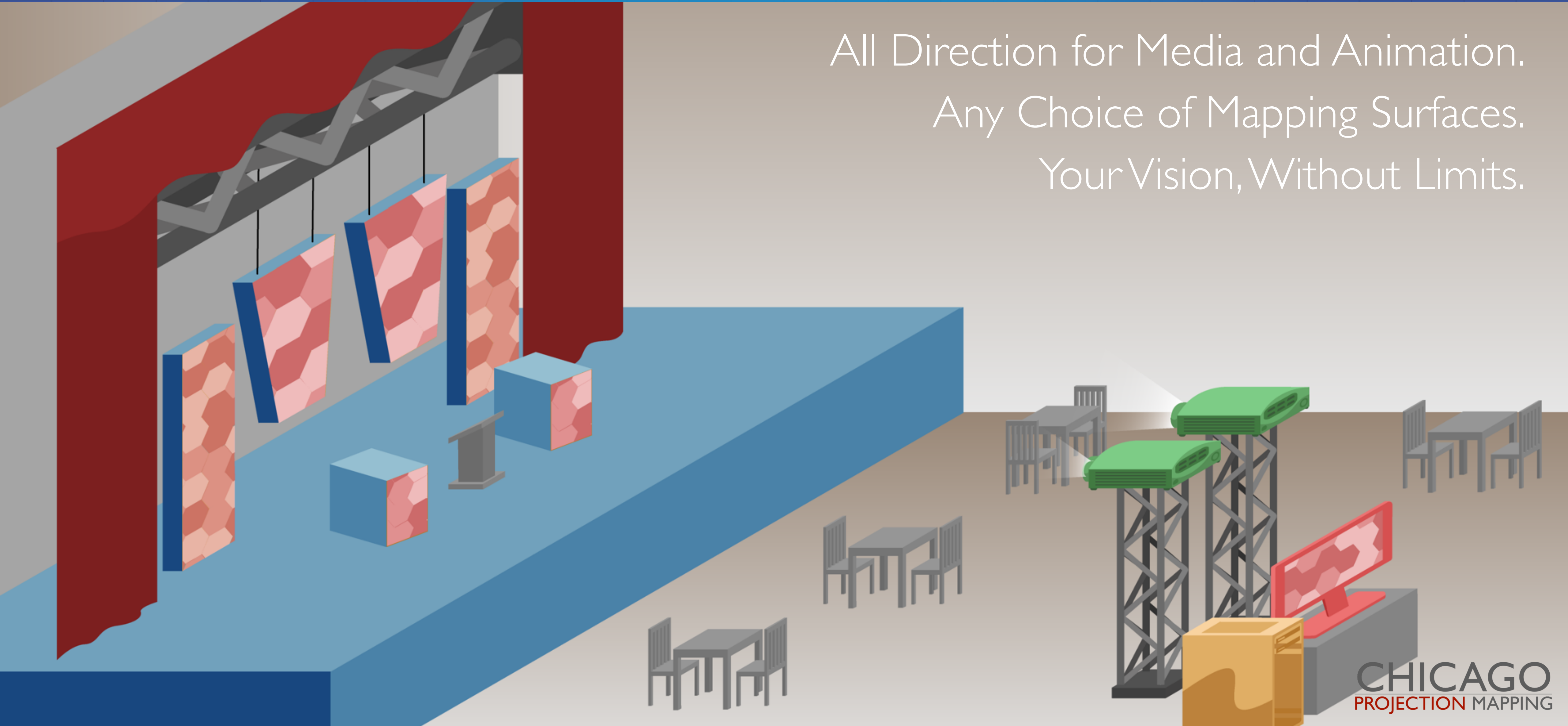
What We Offer

Turn-key mapping creation and integration.
From concept to completion.
At any scale.



What We Offer

All Direction for Media and Animation.
Any Choice of Mapping Surfaces.
Your Vision, Without Limits.



Past Events - *Black Bear Casino Resort*



Watch Online - <https://www.youtube.com/watch?v=n8hQk476hso>

- CPM's largest-scale mapping display to-date, this display was commissioned as part of Black Bear's 75th Anniversary celebrations. Plans were drawn up to transform the Resort for a one-night-only presentation, utilizing twelve stories and all 15,000 square feet of the building facade. The content took the audience on a year-long journey through the seasons and history of Black Bear.
- The end result was a public spectacle that was described by Black Bear Marketing Director Todd Defoe as, "a technological wonder that's better than fireworks." Over 5,000 visitors were present for the final showing of the display, which served as the capstone for a month of other festivities.

Past Events - *Target @ LA Live Nokia Plaza*



Watch Online - <https://www.youtube.com/watch?v=pXM6jC4CxLo>

- In celebration of both Halloween and Dia De Los Muertos (Mexican Day of the Dead), CPM was commissioned to create a multi-night display at Nokia Plaza in Los Angeles. Our team designed a original visual event, set in a projection graveyard to a unique musical score. Our audience was taken on a whimsical adventure though the world of the dead - wrapped in seasonal Target branding.
- Other projection mapping firms told the client that their vision was impossible to execute. CPM took this as a challenge. The final display used eleven projectors on eleven individual surfaces, meeting the client's expectations exactly, and featured custom-created character design and effects.

Past Events - IIT Chicago Kent School of Law



Watch Online - <https://www.youtube.com/watch?v=lpRC1vllfm8>

- One of CPM's most prominent displays, this display was designed to commemorate IIT Chicago Kent School of Law's 125th Anniversary. Designed as a marquee moment to culminate the a night of history and festivities, the 3,000 square foot display served as the climatic centerpiece to an unforgettable evening.
- This display served as a strong demonstration of the variety of visual styles and storytelling methods available to projection mapping. Nearly a dozen micro-stories are told throughout the full piece, ranging from historical to whimsical. Client reaction was incredibly positive to the final display, and the finished piece was featured on international television as an exceptional example of projection mapping.

Our Principals

The CPM Board of Directors comes from a deep pool of professional and creative backgrounds.

J Matthew Nix

Manager, Director of Development

Mapping Director and Business Leader

John Lostroscio

Business Advisor

Product Management and Merchandising Executive

Jim MacDonald

Audio Specialist

EMMY®-Award Winning Live Audio Engineer

Mark R. Smith

Creative Director, Project Lead

EMMY®-Award Winning Media Professional

David & Connie Antler

Business Advisors

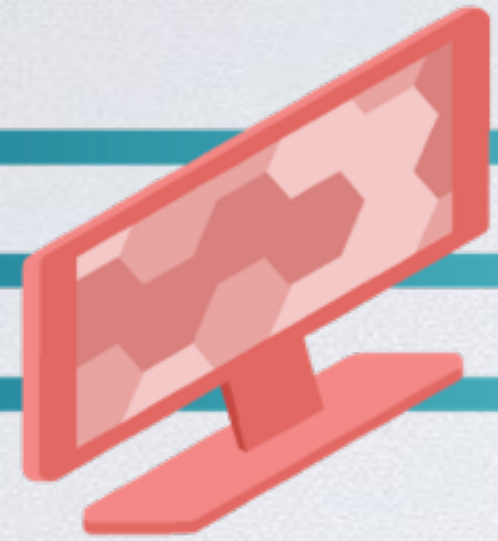
Corporate Development and Franchise Growth

Hal Bernstein

Video Specialist

EMMY®-Award Winning Videographer

Contact Us Today



Contact:

J Matthew Nix, Manager & Director of Development

JMNix@ChicagoProjectionMapping.com

Office: 312.967.7022

CHICAGO
PROJECTION MAPPING

www.ChicagoProjectionMapping.com